



Nehru Yuva Krida & Sanskrit Mandal, Chikhli's

# GAWANDE COLLEGE OF PHARMACY

Lavala Road, Sakharkherda. Tq. Sindkhed Raja, Dist. Buldana (M.S.) - 443202

Phone : 07264-266212 Email :- gcpkherda@gmail.com Website : www.gawandecollegeofpharmacy.org.in

Prof. N. S. Gawande  
Secretary  
Mob. 9822364082

Ref. No.

Date : 02/07/2018

To,

The President Nehru Yuva Krida & Sanskrit Mandal  
Chikhali, Dist Buldhana.


Subject :- Permission to Approval for Green Policy implementation in the College  
campus

**Respected Sir,**

With your kind honor, I am requesting you to please grant us permission for  
implementation of green policy in the college campus.

Thanking you.



  
Principal  
Gawande College of Pharmacy  
Sakharkherda, Tq. Sindkhed Raja  
Dist Buldana (MH)



Nehru Yuva Krida & Sanskrutik Mandal, Chikhli's

# GAWANDE COLLEGE OF PHARMACY

Lavala Road, Sakharkherda. Tq. Sindkhed Raja, Dist. Buldana (M.S.) - 443202

Phone : 07264-266212 Email :- gcpkherda@gmail.com Website : www.gawandecollegeofpharmacy.org.in

Prof. N. S. Gawande  
Secretary  
Mob. 9822364082

Ref. No.

Date :


## NOTICE

### BAN ON USE OF PLASTIC

All teaching, nonteaching staff and students are hereby informed that as we all know, plastic is harmful for our health as well as environment. Therefore the use of plastic is restricted in college campus. Plastic carry bags and other non-recyclable plastic material should not be used. Bags made up of paper, cloth and biodegradable material should be used and promoted.

All are requested to kindly contribute towards making green campus and environmental sustainability.



  
Principal  
Gawande College of Pharmacy  
Sakharkherda, Tq. Sindkhed Raja  
Dist. Buldana (MH)

Copy to – Staff circulation

Student Notice Board



Nehru Yuva Krida & Sanskrutik Mandal, Chikhli's

# GAWANDE COLLEGE OF PHARMACY

Lavala Road, Sakharkherda. Tq. Sindkhed Raja, Dist. Buldana (M.S.) - 443202

Phone : 07264-266212 Email :- gcpkherda@gmail.com Website : www.gawandecollegeofpharmacy.org.in

Prof. N. S. Gawande  
Secretary  
Mob. 9822364082

Ref. No.

Date :

## NOTICE

### RESTRICTED USE OF VEHICLES

All teaching, nonteaching staff and students are hereby informed that as an initiative towards green campus and environmental sustainability, we have decided to observe no vehicle day on every Saturday of the week.


In this context you are informed to use public transport/bicycles on every Saturday. Kindly encourage the use of battery powered electric vehicles.

All are requested to kindly follow the instructions and contribute towards environmental sustainability.

Copy to – Staff circulation

Student Notice Board



  
Principal  
Gawande College of Pharmacy  
Sakarkherda, Tq. Sindkhed Raja  
Dist. Buldana (MH)

## **Gawande College of Pharmacy Sakharkherda Dist Buldhana**

### **No Vehicle Day Report**

Under the program of green environment initiated by the government, the college decided to take this step. The authorities said that going forward, these two Saturdays would be dedicated to cycling and contributing to nature.

The world is on the threshold of serious crisis of Global warming and Climate change. There is a need to spread awareness about the global warming and solution to reduce it. Being a higher educational institute, it is our moral responsibility to take steps towards reduction in global warming and to motivate the society to follow it.

In a bid to promote road safety and reduce the pollution caused by vehicles, Gawande College of Pharmacy Sakharkherda is set to observe a 'No Vehicle Day' once a week. All the students, teaching and non-teaching staff working in the college come to the college as pedestrians or via bicycle or by a public transport service on every Saturday and it will be celebrated as No Vehicle Day.

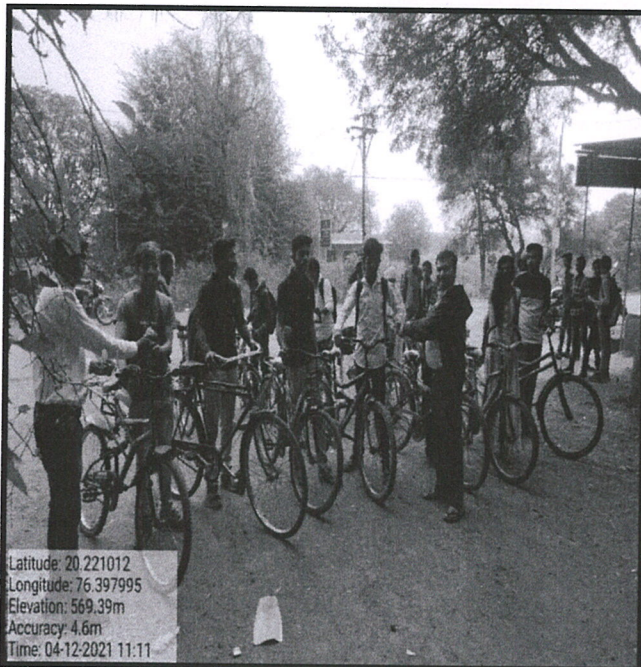
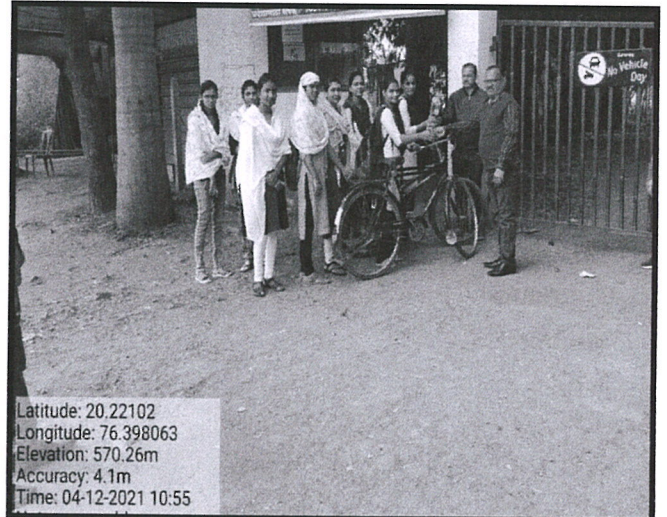
The initiative was aimed at promoting a culture of healthy living and encouraging the use of public transport. The main objective of observing No Vehicle Day is to sensitize the staff and students of the college towards the above-mentioned issues. There should be more usage of the public transport system, reduction in pollution caused by transportation, to reduce traffic on roads and to reduce road accidents, and promote carpooling.


The "No Vehicle Day" activity is being run by the institute once in a week. This activity is adopted by the college staff as well as students and visitors. The reminder notice is being circulated on every Friday. All entry points into the campus were closed for vehicles and those who came by vehicles had to park them outside the campus and walk to their department or office. With most of the students of Gawande College of Pharmacy Sakharkherda come from nearby villages, they use public transport for daily commute to the college. Bus stand is just one kilometers away from the campus so outstation students do not find it difficult to observe the no vehicle day. The physically challenged students are very less in number and they have exempted from this initiative.



## No Vehicle Day

Use of Bicycles/ Battery powered vehicles



  
Principal  
Gawande College of Pharmacy  
Saknarkherda, Tq. Sindkhed Raja  
Dist. Buldana (MH)



Nehru Yuva Krida & Sanskrutik Mandal, Chikhli's

# GAWANDE COLLEGE OF PHARMACY

Lavala Road, Sakharkherda. Tq. Sindkhed Raja, Dist. Buldana (M.S.) - 443202

Phone : 07264-266212 Email :- gcpkherda@gmail.com Website : www.gawandecollegeofpharmacy.org.in

Prof. N. S. Gawande  
Secretary  
Mob. 9822364082

Ref. No.

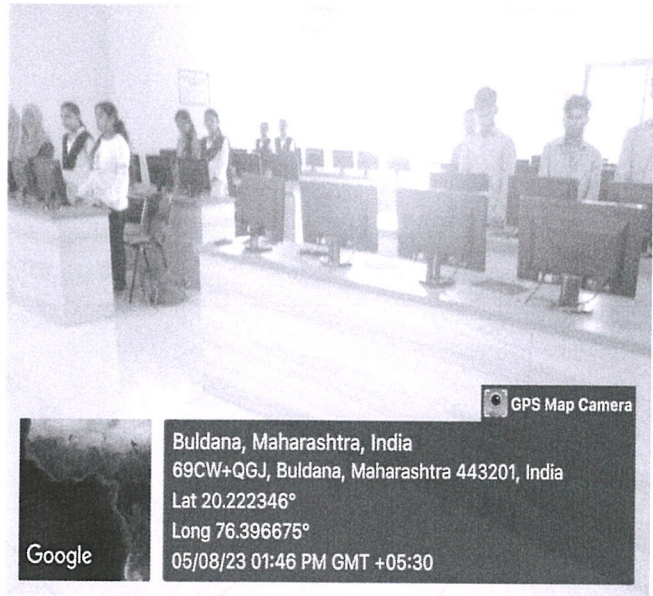
Date :

## 71.2 The institution has facilities and initiatives for

### 1. Alternate Sources of energy and energy conservation measures.



Solar Lamp in College Campus

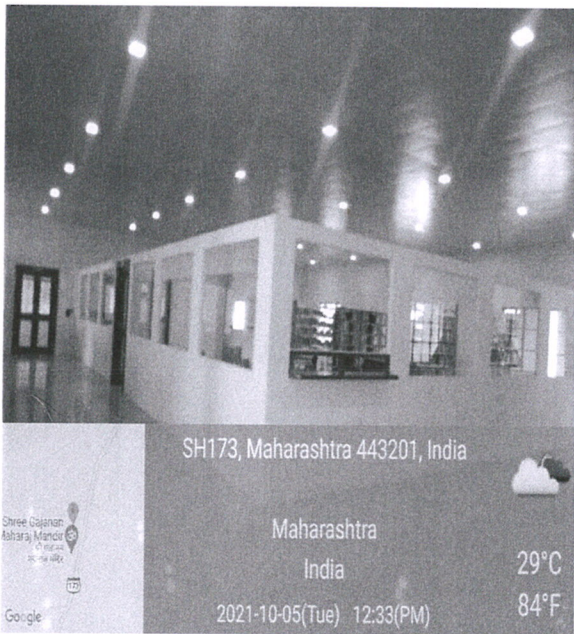


Energy Saving Computer Lab





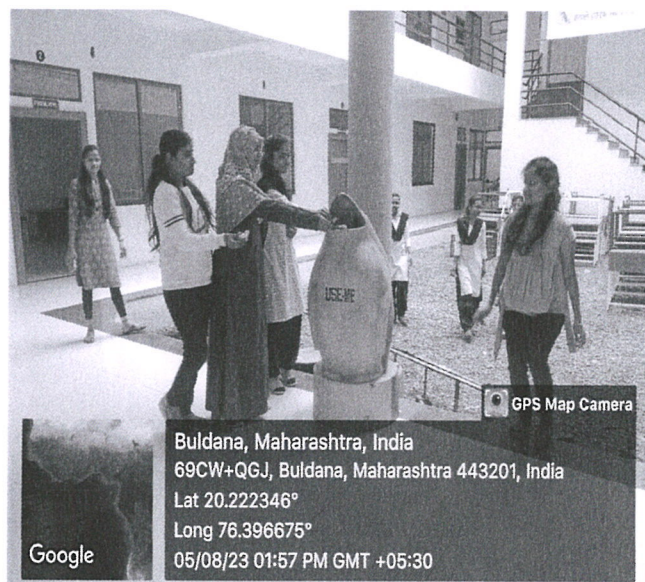
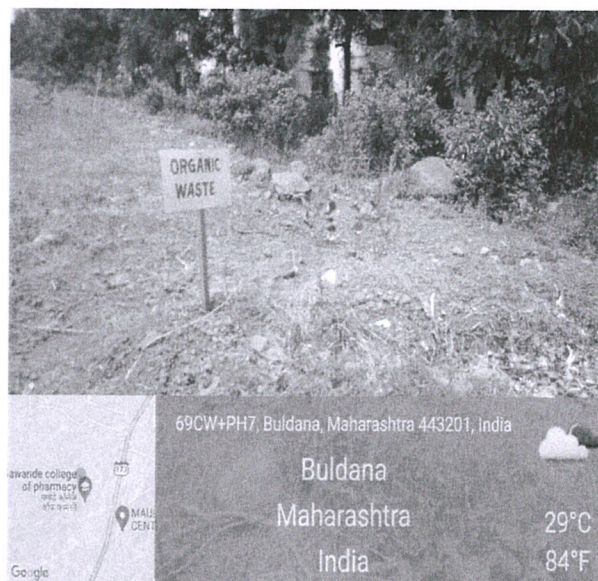
Sensor Based Urinal System



Use of LED Bulbs



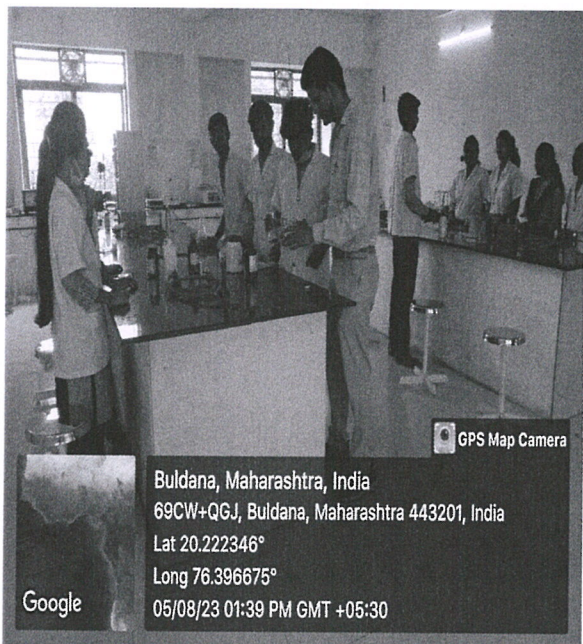
## 2. Management of the various types of degradable and nondegradable waste.



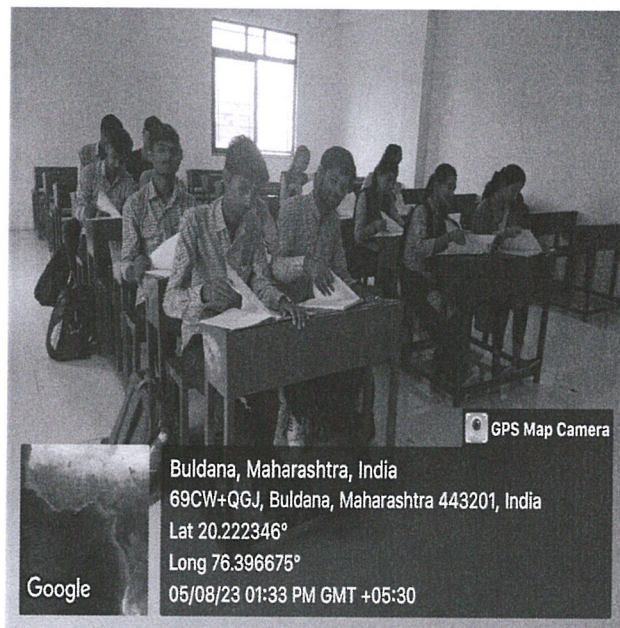
Use of Dustbin







Chemicals used as required in the Lab.



Student reused old notebook to avoid Waste



### 3. Water Conservation

#### 1. Rain water harvesting



Structure for the rain water harvesting near library building



Tunnel collecting rain water for harvesting in College Campus





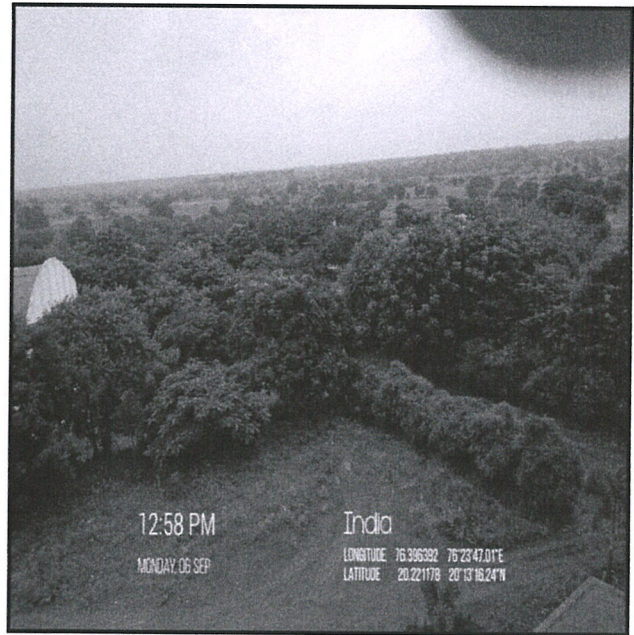
Borewell recharges with water conservation structure in campus



Drip irrigation system for garden



#### 4. Green campus initiatives



Pedestrian Friendly pathways





01:45 PM  
MONDAY, 06 SEP

India  
LONGITUDE 76.398996 76°23'56.38"E  
LATITUDE 20.21695 20°13'1.02"N



01:45 PM  
MONDAY, 06 SEP

India  
LONGITUDE 76.398996 76°23'56.38"E  
LATITUDE 20.21695 20°13'1.02"N



01:45 PM  
MONDAY, 06 SEP

India  
LONGITUDE 76.398996 76°23'56.38"E  
LATITUDE 20.21695 20°13'1.02"N

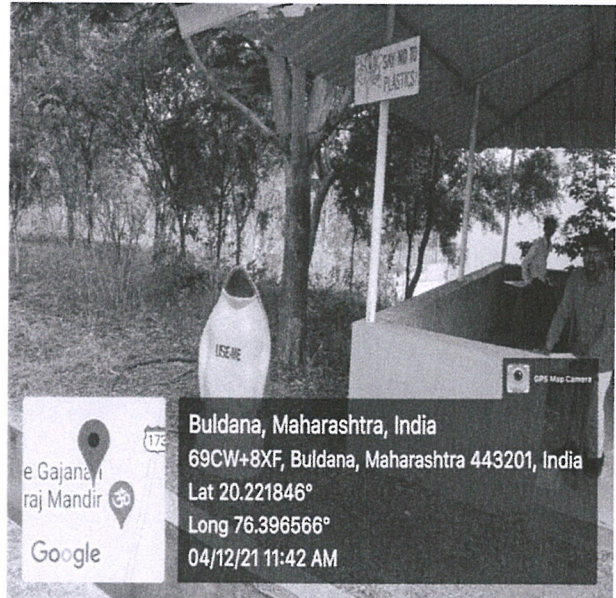


01:45 PM  
MONDAY, 06 SEP

India  
LONGITUDE 76.398996 76°23'56.38"E  
LATITUDE 20.21695 20°13'1.02"N

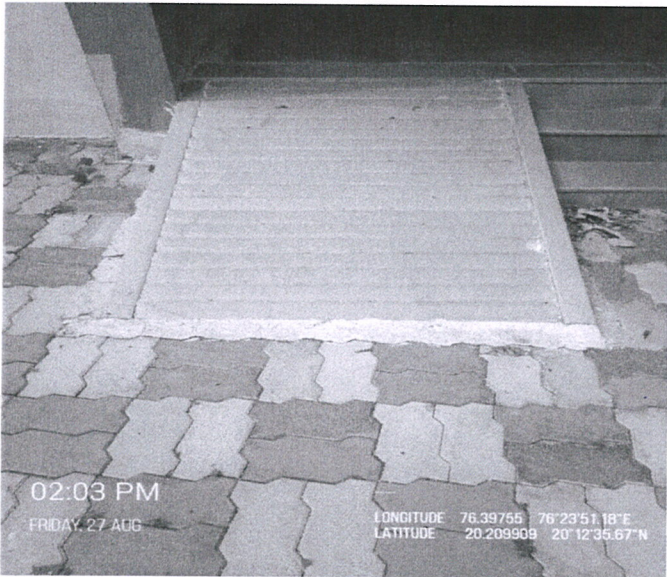


## Ban on use of Plastic



## 5. Disable- friendly, barrier free environment

### Disabled friendly barrier free environment

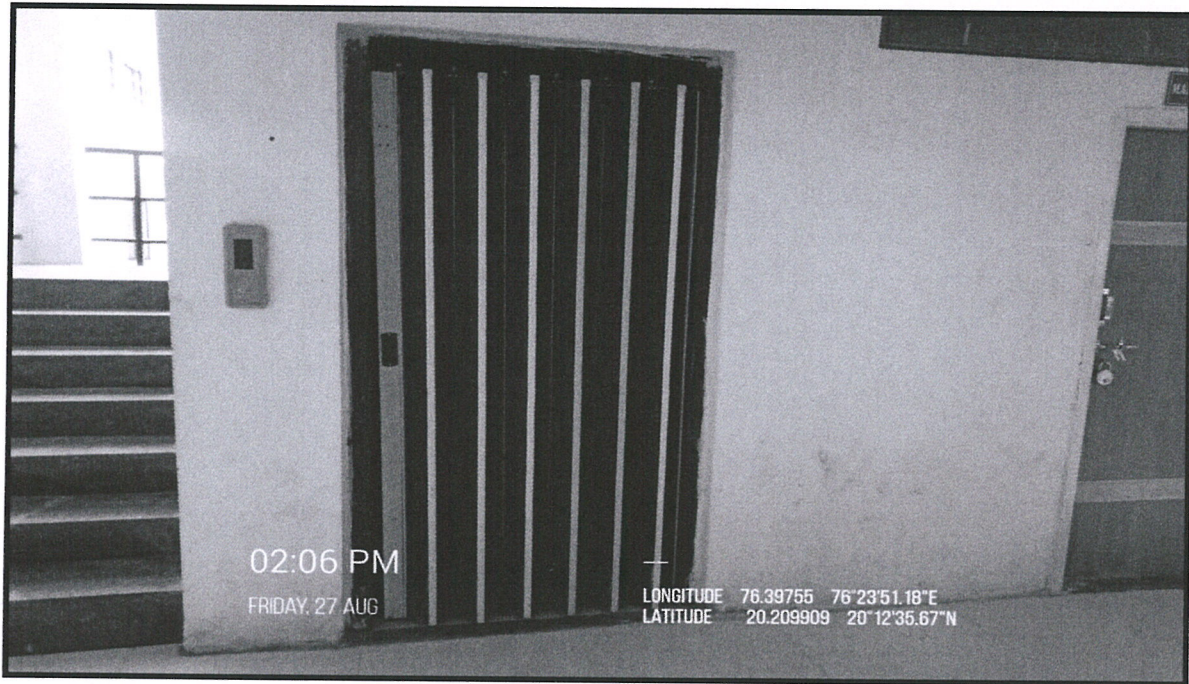


Ramp for Disable Students

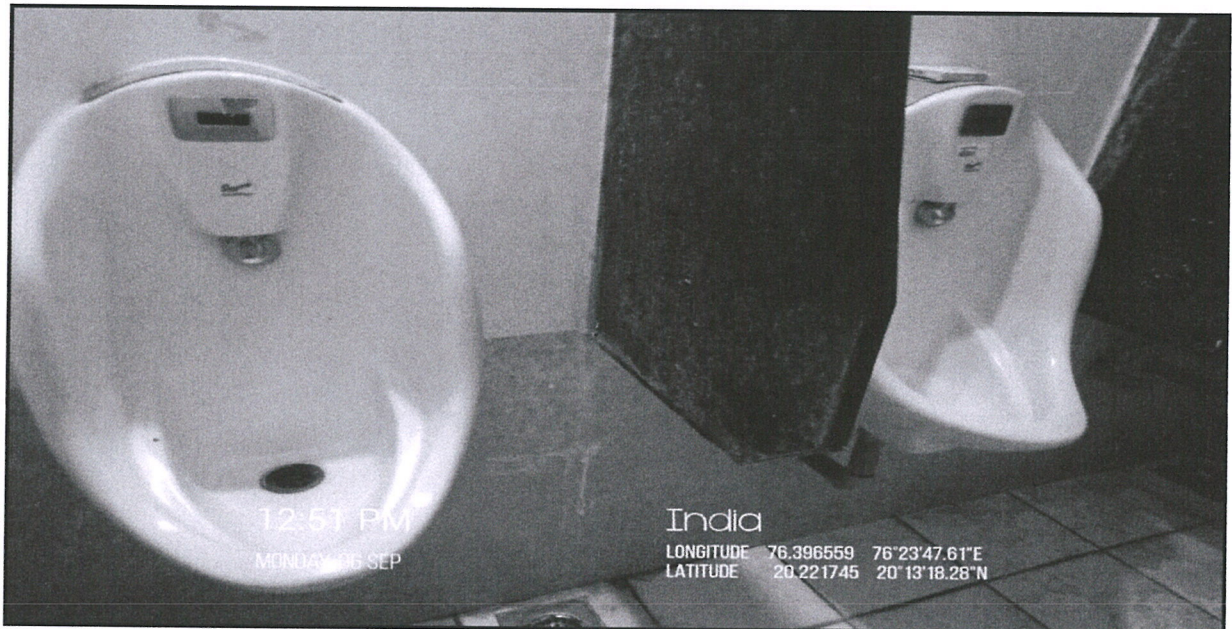


Wheel Chair for disable Students





**Lift Facility for Disable Students**



**Urinal's for Disable Students**



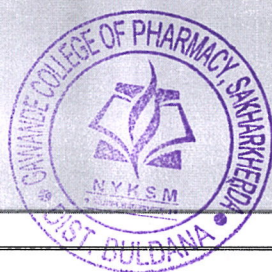


Nehru Yuwa Krida Wa Sanskrutik Mandal, Chikhli's  
**Gawande College of Pharmacy**  
**Sakharkherda**

Affiliated to Sant Gadge Baba Amravati University, Amravati

**Green Campus Initiatives**

**(Various Policy Document/Decision Circulated for Implementation)**



## Green Campus Initiatives

---

### Contents

Sr. No	Particulars
1.	Policy document on Green Campus
2.	Decision Circulated for Implementation



Nehru Yuwa Krida Wa Sanskrutik Mandal, Chikhli's  
**Gawande College of Pharmacy**  
**Sakharkherda**

Affiliated to Sant Gadge Baba Amravati University, Amravati

**Policy Document**  
**On**  
**The Green Campus**



## Policy Document on the Green Campus

**Green Campus :** A Green Campus is a place where environmental friendly practices and education combine to promote sustainable and eco-friendly practices in the campus. The green campus concept offers an institution the opportunity to take the lead in redefining its environmental culture and developing new paradigms by creating sustainable solutions to environmental, social and economic needs of mankind.

**Objectives of the Go Green Programme:** The first step of the Go Green programme involves establishing a viable Green-Campus Committee, within the organizational structure of the Institute. Hence, to give this initiative more clarity and authenticity we now roll out a POLICY DOCUMENT spelling out the strategies plans and other allied tasks to make this program functional officially.

We believe that greening the campus is all about sweeping away wasteful inefficiencies and using conventional sources of energies for its daily power needs, correct disposal handling purchase of environment friendly supplies and effective recycling program. The administration of the Institute believes that everyone has to work out the time bound strategies to implement green campus initiatives. These strategies need to be incorporated into the institutional planning and budgeting processes with the aim of developing a clean and green campus. Every individual of Gawande college of Pharmacy Sakharkherda, will work may he/she be a student, faculty and support staff to foster a culture of self-sustainability and make the entire campus environmental friendly. The Green Campus Initiatives (GCI) will enable the institution to develop the campus as a living laboratory for innovation.

### Composition of the Environmental Awareness & Garden Committee

Sr. No	Name	Designation
1	Miss. J. B. Sanap	Chairman
2	Dr. H. S. Patil	Lead Auditor
3	Mr. S. P. Thombare	External Green Auditor
4	Mr. A. K. Wagh	Internal Green Auditor
5	Mr. T. R. Sheikh	Member
6	Miss P. D. Thakare	Member,
7	Miss S. Giri	Green Audit Expert
8	Mr. Aslam Sheikh	Green Audit Expert
9	Mr. Amol G. Jadhao	Coordinator



### **B. Role of the Go- Green Campus Programme:**

The impetus for a successful Green Campus must begin at the top and emanate throughout the rest of the campus. Without a strong message of commitment and involvement from both the Chairperson and Members of the Committee, will-intentioned initiatives may be too fragmented to allow for institute-wide participation. Thus in view of this, the committee will plan and execute to:

1. Seek views of all the Stakeholders to make the Go Green Campus initiative functional throughout the year.
2. Conduct the Campus 'environmental impacts to identify the targets for improvements.
3. Establish a Green Campus Environmental Ethic Awareness campaigns.
4. Establish a Green Campus Mission and a Statement of Principles.
5. Link Green-Campus activities to Academics in the Institute.
6. Organize Awareness Programs for the students, faculty and society.
7. Chart out a yearly planner for the Institute, Local community and Stakeholders.
8. Develop a strategic plan and create student teams to carry out specific tasks of the strategic plan.
9. Phase out the CFL and conventional light source such as bulbs and tube lights, halogen and mercury street/campus lights and get them replace by the LEDs
10. Conduct an Annual Green, Environment and Energy Audit.
11. Purchase only Energy Efficient Computers viz. "ENERGY STAR" or any other equivalent.
12. Evaluate daily operations in terms of pollution prevention, waste stream management, and energy efficiency reducing, reusing, recycling, and repairing wherever possible.
13. Secure a commitment up front from the people in charge that well founded. Recommendations will be acted upon once audits are completed.

### **C. Promotion of "Save Energy Tips" in and outside the Institute:**

- Activate power management features on your computer and monitor so that it will go into a low power "sleep" mode when you are not working on it.
- Turn off Your monitor when you leave your Table.
- Activate power management features on your laser printer.



- Whenever possible, shut down rather than logging off.
- Turn off unnecessary lights and use daylight instead.
- Avoid the use of decorative lighting.
- Use LED or compact fluorescent bulbs.
- Keep lights off in Seminar Hall, Classrooms, Lecture halls when they are not in use.
- Use the fan only when they are needed.
- Unplug appliances not plugged into power strips (like TVs, Refrigerators, ACs, tea/coffeepots, printers, faxes, and chargers etc.)

**D. Waste water Management/Rainwater harvesting:**

The Institute has to work in the direction of waste water management particularly in Laboratories. Water flow restrictors on bathroom faucets and showers, low water flow toilets and automated urinal flushers should be used to cut down campus water use. The Institute will take all necessary measures to implement waste water management/rain water harvesting.

**E. Major Green Campus Initiatives:**

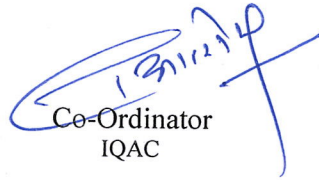
- Waste water Management/ Rainwater harvesting
- Sensor based energy conservation
- Maintenance of water bodies and distribution system in the campus
- MIS to make paperless administration
- Plastic free Campus
- Tree plantation Drive
- Cleanliness Drive
- Landscaping and gardens.
- Use of LEDs only
- Digital Library/E-Learning Centre
- Organization of sensitization programmes for the stakeholders
- Establishment of Environmental Awareness & Garden Committee.
- Green Environment and Energy Audit Conducted




- Restricted entry of automobiles
- No Vehicle Day observed.

The Institute will make all the necessary efforts to involve the students, faculty and staff in “Green Campus Initiatives.”

Co-Ordinator  
Environmental Awareness &  
Garden Committee

  
Co-Ordinator  
IQAC

  
Principal  
Gawande College of Pharmacy  
Saknarkherda, Tq. Sindkhed Raja  
Dist. Buldana (MH)



Nehru Yuwa Krida Wa Sanskrutik Mandal, Chikhli's

# Gawande College of Pharmacy Sakharkherda

Affiliated to Sant Gadge Baba Amravati University, Amravati

**Green Literacy Program**





## Green Literacy Program

### Contents

- **Objectives**
- **Conserving Water Resources**  
Rainwater Harvesting-
- **Energy Saving Initiatives**  
Use of Solar Energy  
Installation of LED Bulbs in the campus
- **Waste Management**  
Reducing Chemical Waste by Micro scaling  
TechniqueE-Waste Management  
Recycling of Paper
- **Initiatives taken by the institution to promote the “Green Literacy Program”**  
Green Literacy Survey

Awareness Program on practicing Green initiatives and Environment Sustainability in a nearby area

Green literacy Survey” in nearby areas around Sakharkherda

Celebrating No- Vehicle Day



### **About Green Literacy Program:**

Clean environment is the basic necessity of human being for maintenance of good health and efficiency. Limited availability of public transport has resulted into increased use of personal vehicles, which is one of the causes of increase in air pollution. Due to extensive urbanization, water is increasingly becoming a scarce natural resource in metropolitan cities like Pune. Solar energy can be the potential replacement for conventional electricity.

In order to keep the college campus '*clean and green*', the college has undertaken 'Green campus initiative'

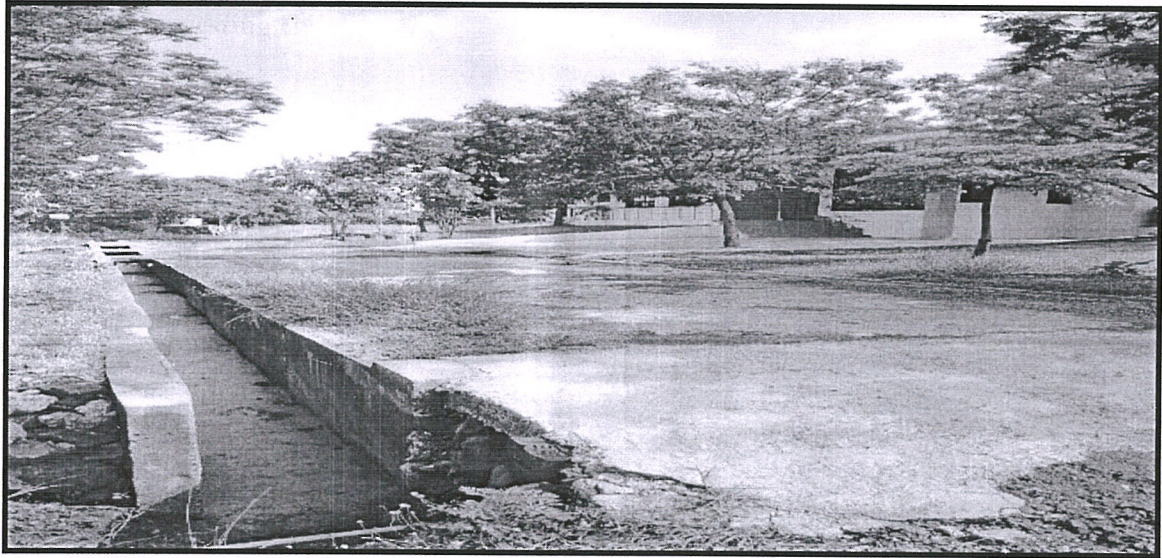
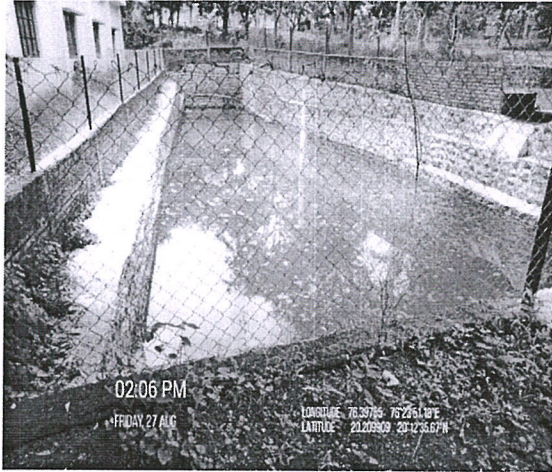
- **Objectives:**

- To shape eco-friendly campus by adopting new strategies and methods to minimize wastage of resources.
- Promoting three R's - Reduce, Reuse & Recycle .
- To use renewable energy resources particularly solar energy.
- To efficiently use water resources by installing rain water harvesting unit.
- To minimize the environmental pollution on the college campus.
- To organize environmental awareness campaign and motivational program.
- Organization of events like seminars, exhibitions and workshops to create awareness about environment.
- To distribute literature, posters, banners, advertisement related to Green Literacy.
- Promoting Protection, Preservation & Restoration of the natural eco-system



- **Conserving Water Resources**

**Rainwater Harvesting Unit**



ENERGY SAVING INITIATIVES  
Use of Solar Energy

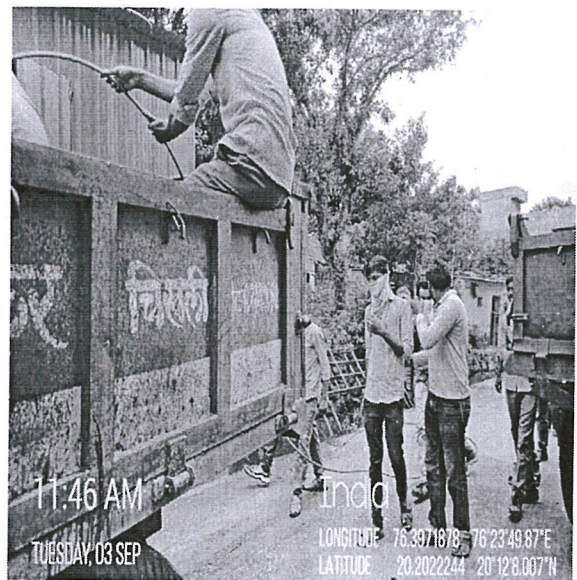
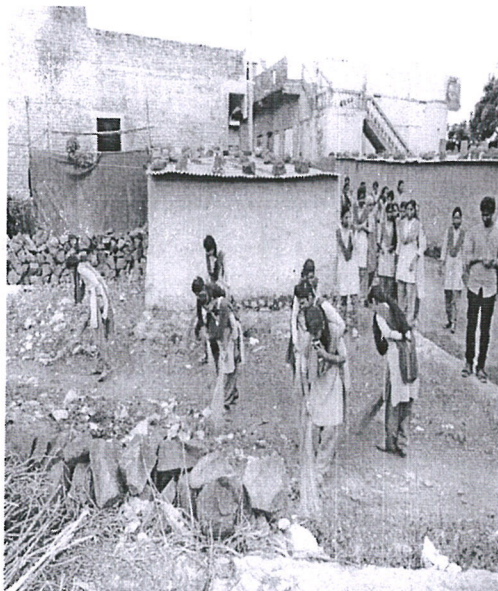
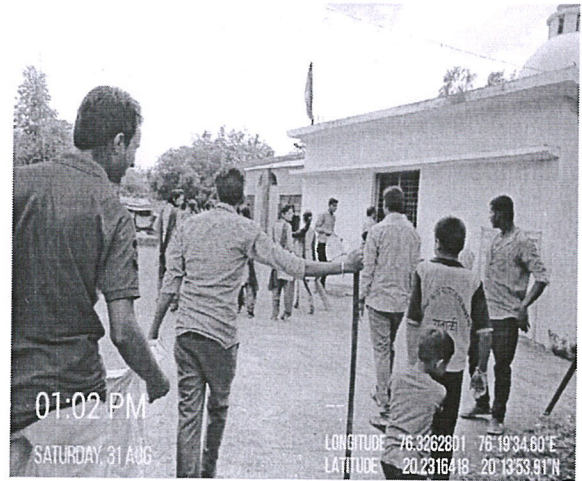
a. Installation Of Solar Lamps



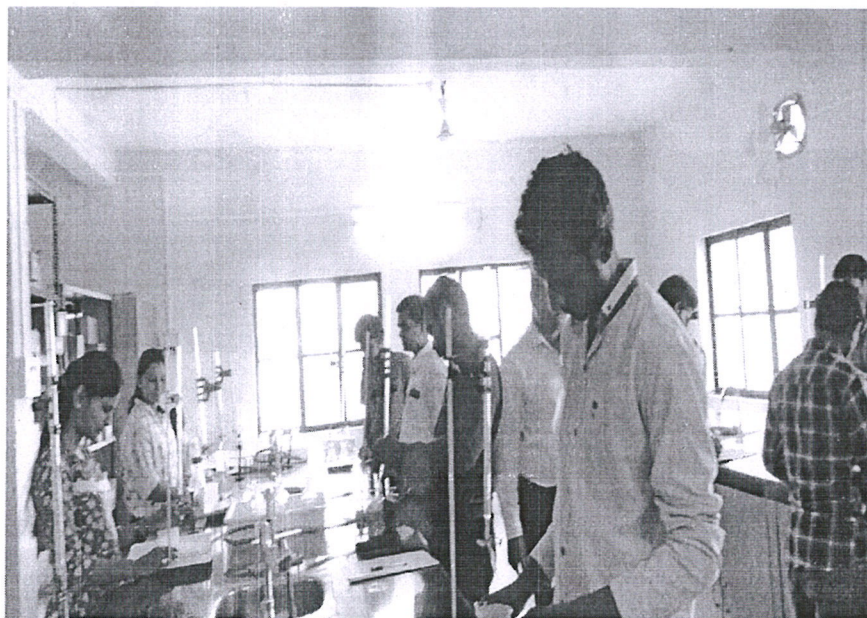
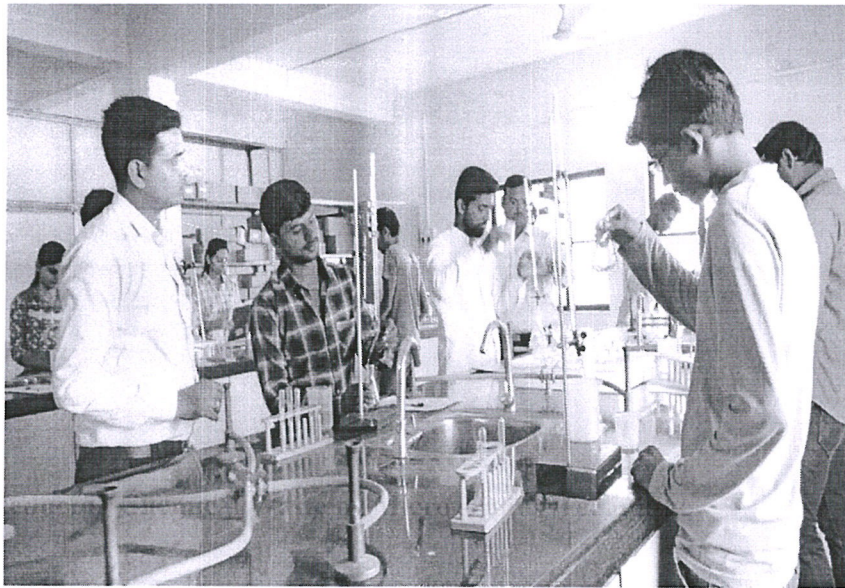
b. Installation Of LED bulbs



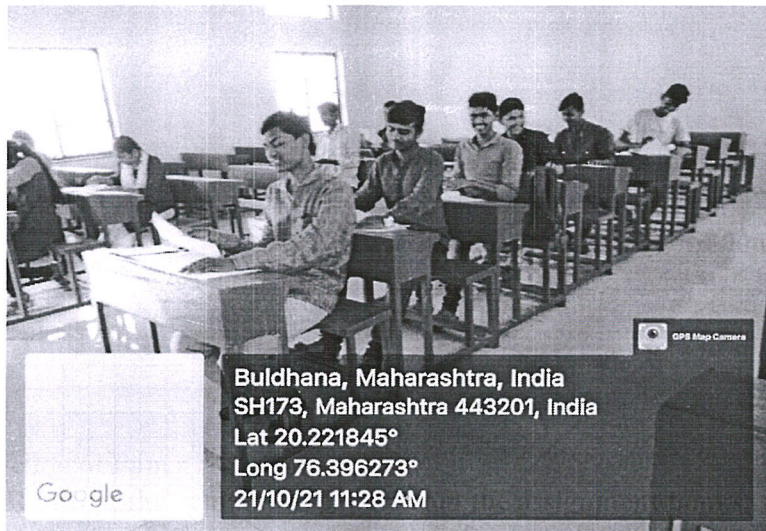
• Waste Management  
Students participating in Cleanliness Drive in and around the Campus.



## Reducing Chemical Waste by Micro scaling Technique



- **Recycling of Paper**  
**Students Re-using the remaining paper from the assignment books**



Initiatives taken by the institution to promote the “Green Literacy Program

Green literacy Survey” in nearby areas around Sakharkherda

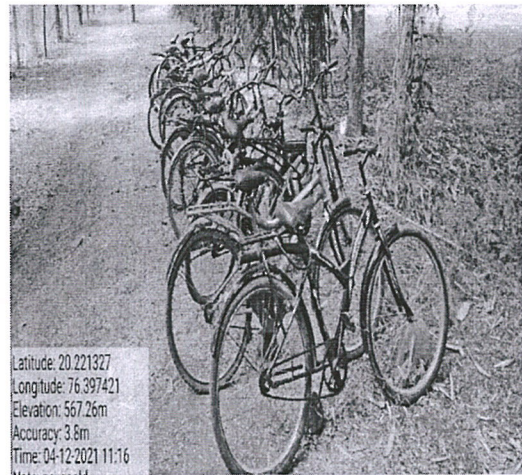





**Awareness Program on practicing Green initiatives and Environment Sustainability in a nearby area.**



## Celebrating No- Vehicle Day



  
Principal  
Sawande College of Pharmacy  
Saknarkherda, Tq. Sindkhed Raja  
Dist. Buldana (MH)

Neharu Yuva Krida Wa Sanskrutik Mandal Chikhali's

**GAWANDE COLLEGE OF PHARMACY SAKHARKHERDA DIST  
BULDANA**

Affiliated to Sant Gadge Baba Amravati University, Amravati

**Policy For  
Disability Support Facilities**

**Information Brochure on  
Disabled-Friendly & Barrier Free Environment**



## Policy for Disability Support Facilities

### Disability Support Facilities:

The Institute recognizes the importance of creating a climate of understanding and mutual respect to cater for the dignity and worth of each person, so that they contribute whole heartedly to the development of Self, Institute, Society and Country at large.

The Institute propagates and strategizes to promote equal right and access to education for all those who are underprivileged with physical disability. It is vigilant to the fact that despite a highly regulated and complex education framework of the nation, it should be easily available for the students with “special needs”.

Moreover, the Persons with Disabilities Act 1995 indicates that differently-abled persons should have access to education at all levels. In view, this Institute has created Disability Support Facilities (DSF) to provide access to the differently abled students of the Institute to varied programs, services, activities. Besides, the DSF also would encourage them for the highest levels of academic and personal achievement; and advocate an accessible environment for them. The policy has been devised to promote the holistic development of differently abled students. Also, the Institute strives to create accessory and homely ambience and facilities for these students. It takes care to nurture them right from helping them to seek admission till they pass out from the Institutes.

### Objectives:

1. Students with disability will have equitable access and practical support to participate fully in the life of the Institute viz:
  - a. Access to academics, co and extra- curricular activities.
  - b. Access to buildings and facilities.
  - c. Receiving information in accessible formats.
  - d. Receiving a high quality service from faculty members and staff.
  - e. Opportunities to make complaints and provide feedback.
  - f. Opportunities for employment at the Institute.
2. To facilitate the personal and professional growth of students with different abilities.
3. To encourage them to participate in all the co-curricular and extra-curricular activities.
4. To extend add on programs and skilling opportunities for them.



### **Scope and Facilities under DSF available at the Institute:**

1. Priority in admission
2. Concession in fees
3. Availability of Uniform at free of cost
4. Easy access to Classroom through lift
5. Easy access to laboratories at ground floor
6. Ramps & Rails
7. Lifts
8. Disabled Friendly Washroom
9. Wheel Chairs
10. Bank of Scribes
11. Human Assistance Group for reading and movement in the campus
12. Signage of tactile path
13. Signage of Display of Boards
14. Provision of guidance and counseling to differently abled individuals
15. On campus medical facility

#### **1. Physical Facilities:**

The college provides special facilities for the differently-abled students and persons to provide them opportunities to acquire quality education and to bring them into the main stream of the society. The college has a social responsibility and perception that differently-abled students should be respected and treated as a normal human being.

#### **Wheel chair facility**



## 2. Ramp/Rails:

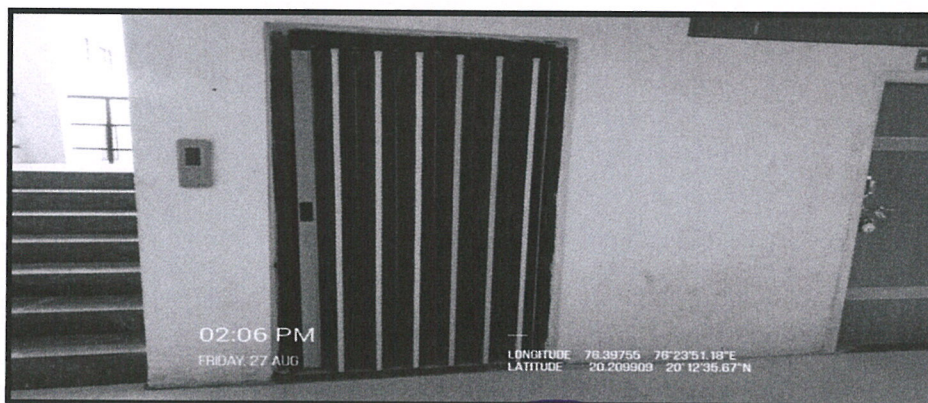
The college has a special facility of ramp and rails for the differently-abled students. The main entrances and exits are clearly identifiable and easily accessible. It can accommodate wheelchair users. Steps and ramps have hand railings and the entrance permitting access to a conveniently located lift.

### Ramp/ Rails



## 3. Provision for the Lift

Parking for people with disabilities is available near the building. This is easily accessible to cross-disability groups equally. Accessible indoor parking spaces are located close to the lift. The doors should be wide enough to accommodate wheelchair users and the space inside is sufficient for them. Appropriate heights control panels and the large buttons are embossed. Visual and audible signals indicating the arrival at different floors is available.



#### 4. Rest Rooms:

Separate toilets are available for people with disabilities. They are clearly identifiable and accessible. The doors are wide enough and lockable from inside and releasable from outside. There is enough maneuvering space inside. All floor surfaces are slip resistant. Mirrors, flushing arrangements, dispensers mounted at appropriate heights.



#### 5. Scribes for the Examination:


There are some students who feel difficult to take the examination and they need scribes with them. The college provides or allows the students to take the help of scribes in the examination. The college has established the Human Assistance Group consisting 21 students voluntarily ready to render their services to the differently abled students as scribes and readers to assist them. The details of the contacts and accessibility are made available on the college website

- a) The blind student may select the scribe.
- b) The scribe needs to have a qualification lower than that of the student. The scribe should not have the qualification (with the same optional and languages) pertaining to the examinations, which the student is writing ( For example, student who has completed B. Pharm. Examinations).



c) A physically disabled / blind / hearing impaired candidate and the scribes for such a candidate shall be allowed an extra time of 20 minutes per hour. As the hearing impaired students are having language problems, possibilities of grammar mistakes, mistakes in building the sentences are there. Hence, the answer papers shall be identified separately and evaluated with additional care.



  
Principal  
Sawande College of Pharmacy  
Saknarkherda, Tq. Sindkhed Raja  
Dist. Buldana (MH)



# Certificate

This is to certify that “EcoShastra”, Pune has conducted an Energy Audit of “Gawande College of Pharmacy, Sakharkherda, Buldhana”. It has been observed that the campus has taken initiatives to implement various Energy Efficiency Measures (ECM’s) by identifying various energy conservation opportunities (ECO’s) to conserve electrical energy but also started utilizing energy from hybrid renewable energy sources like wind Power and rooftop Solar PV systems.

**Certified issued in:** September 2023

**Certificate valid till:** August 2024

*Thombare S.P.*

Shubham P. Thombare  
Environment Auditor



*H.S. Patil*

Dr. H. S. Patil  
Lead Auditor

